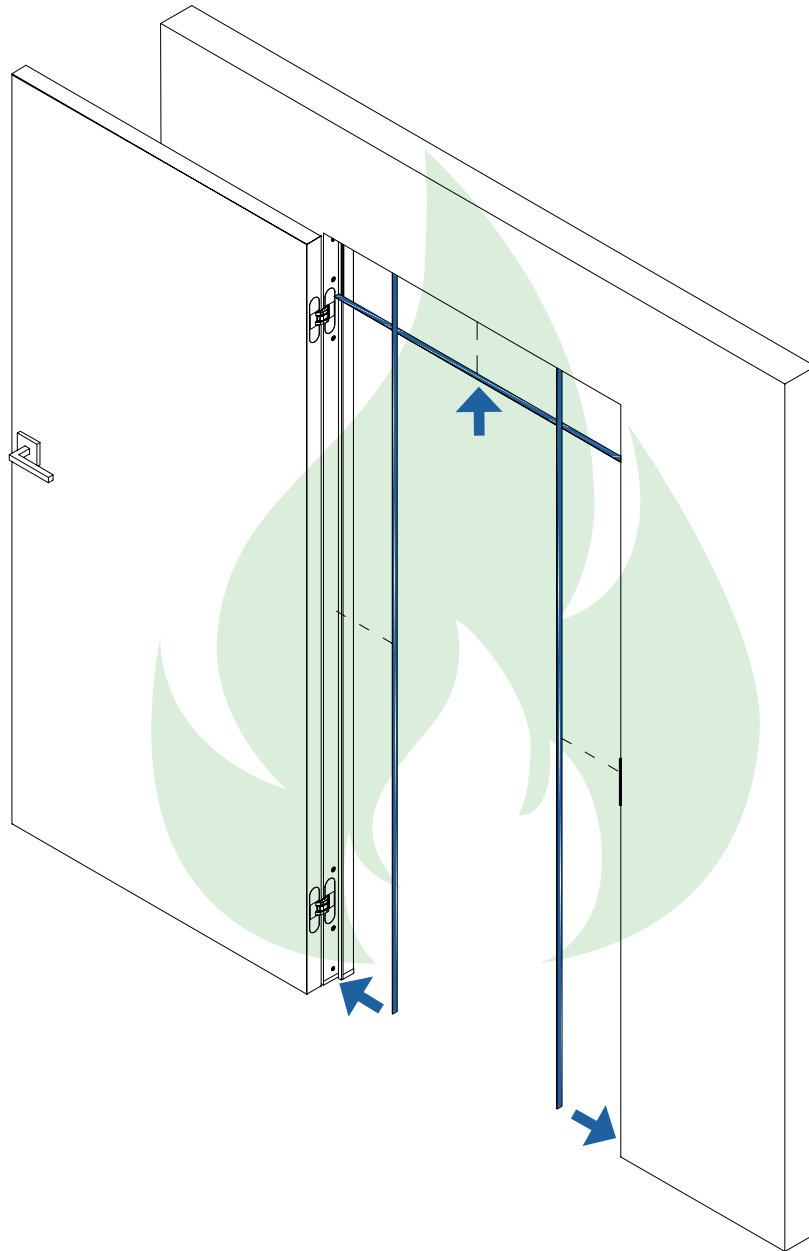




ROCKET DOOR FRAMES

ROCKET FLUSH HINGED DOOR FRAME



HINGED FD30 APPROVED  **Fitting the intumescent strips**

 **CAUTION**

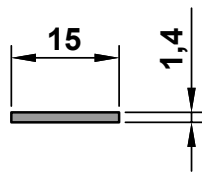
It is imperative you follow these instructions on fitting the intumescent strips exactly for your frame to meet the approval guidelines for a 30 minute fire door system. So please pay careful attention. Rocket door frames must be fitted with approved 44mm thick FD30 30 minute Fire Doors and the enclosed intumescent strips to comply with Fire Regulations.

TOOLS REQUIRED



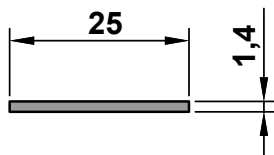
EACH KIT CONTAINS

af
x1

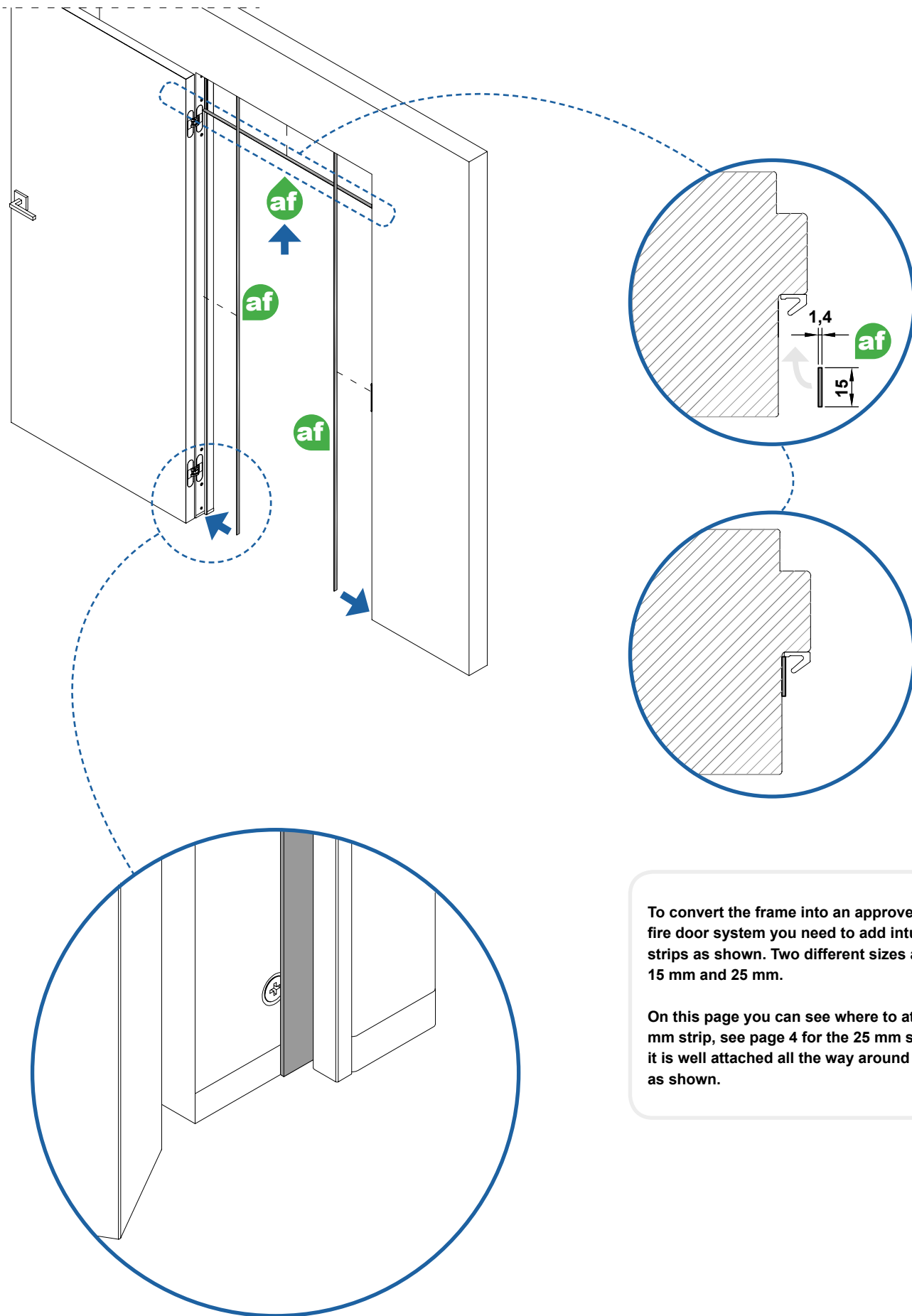


INTUMESCENT STRIPS ODICE FLEXODICE SA

bf
x1

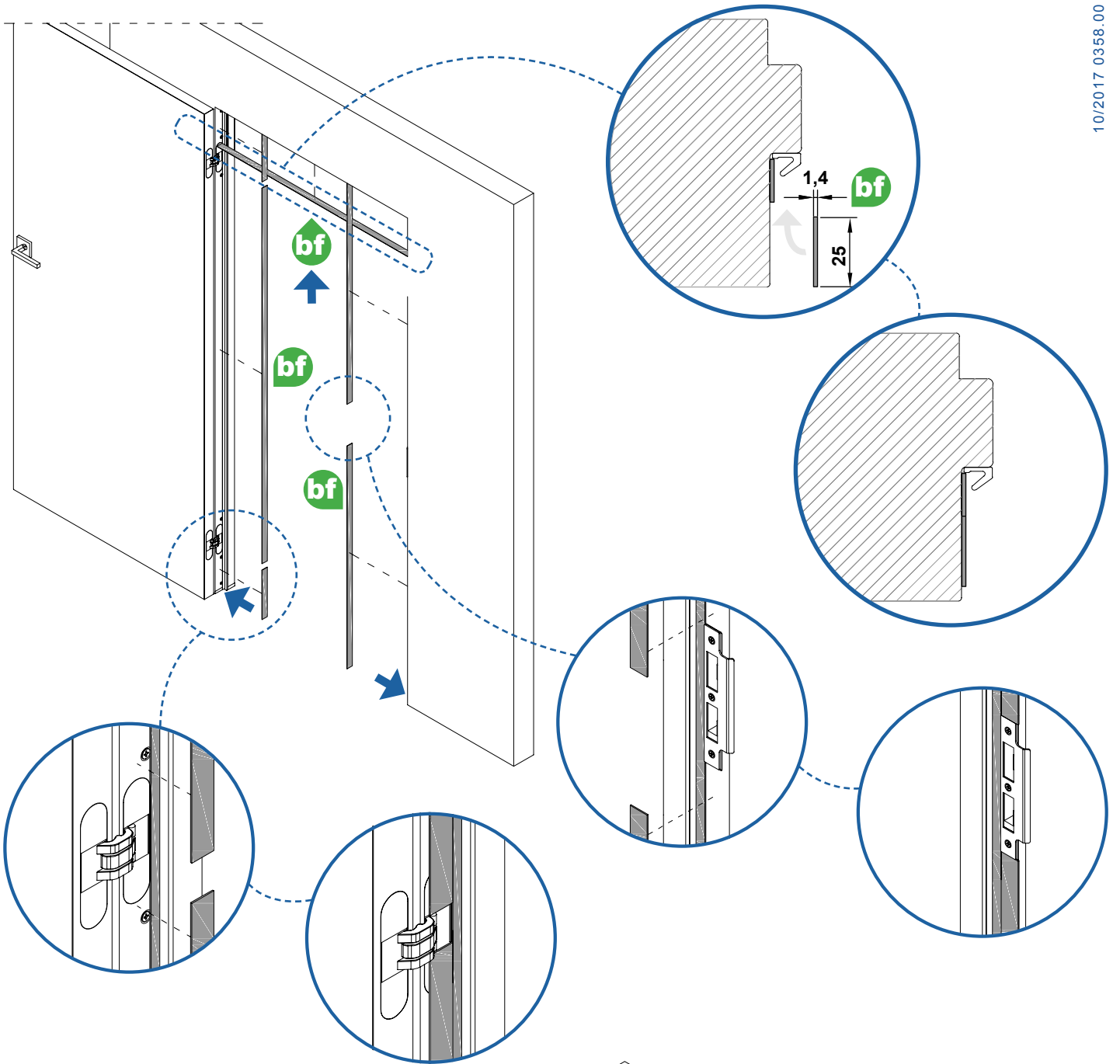


INTUMESCENT STRIPS ODICE FLEXODICE SA



To convert the frame into an approved 30 minute fire door system you need to add intumescent strips as shown. Two different sizes are required 15 mm and 25 mm.

On this page you can see where to attach the 15 mm strip, see page 4 for the 25 mm strip. Ensure it is well attached all the way around the frame as shown.



Rocket Frames have been approved for use with 30 minute fire doors (44 mm thick) and suitable external 30 minute approved door closers.

DOOR CLOSERS



Use suitably approved external door closers with a minimum EN3 power rating. Install exactly as manufacturers instructions.

